



2023 RAMP CLOSURES

Ramps for Orchard Lake, American Drive, and US-24 will be closed from Spring 2023 until Fall 2023.

Ramps planned to be closed for the duration of the construction season:

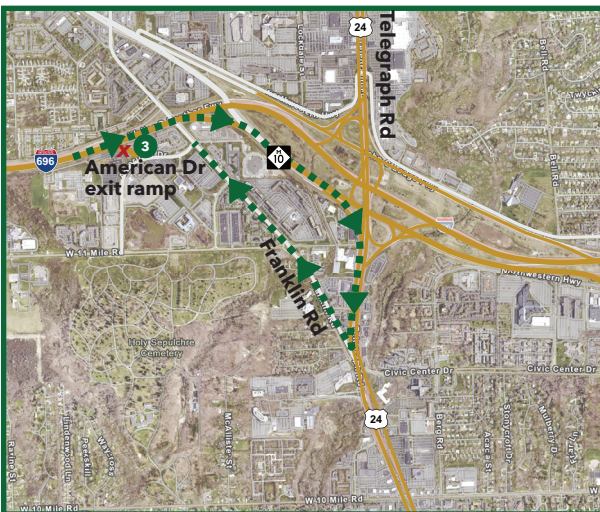
- 1 SB Orchard Lake Rd on-ramp to EB I-696
- 2 NB Orchard Lake Rd on-ramp to WB I-696
- 3 EB I-696 exit ramp to American Dr
- 4 NB US-24 on-ramp to EB I-696

Detour routes for the exits on the left can be noted in each of the three separate maps below.

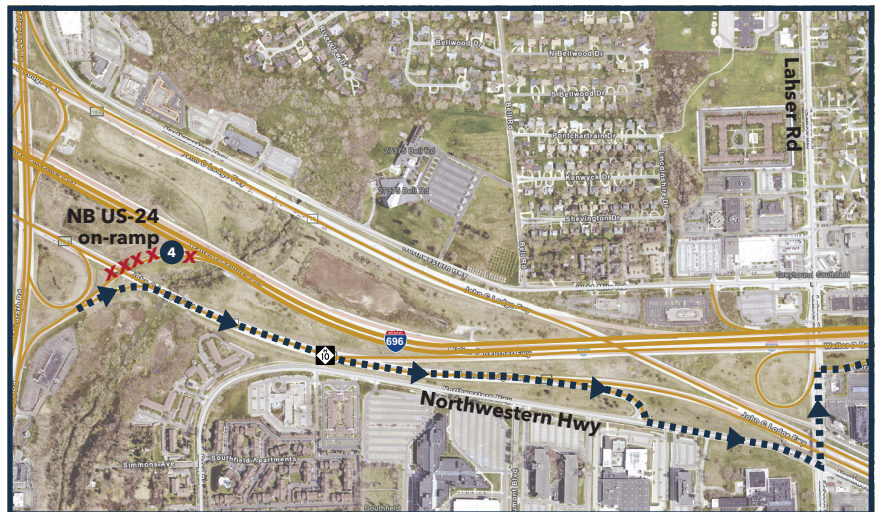
x indicates closure



- 1 Detour for Orchard Lake Rd SB on-ramp closure to EB I-696: East on 12 Mile Rd to SB Northwestern Highway (M-10)
- 2 Detour for Orchard Lake Rd NB on-ramp closure to WB I-696: West on 12 Mile Rd to M-5



- 3 Detour for American Dr exit ramp from EB I-696: SB Telegraph (US-24) to NB Franklin Rd



- 4 Detour for NB US-24 on-ramp to EB I-696: NB Telegraph (US-24) to SB M-10 to NB Lahser to EB I-696